



# DATA SHEET

## RELAY MODULE

### DESCRIPTION

The Relay Module, P/N 55-043 & 55-048, provides two sets of Form "C" dry relay contacts that switch together (DPDT). These contacts can initiate emergency control functions (i.e., damper closure, fan control, door holder interface, elevator recall, etc.). There is also an input capable of monitoring a dry set of contacts for open or closed conditions. The module has a multi-color LED that will illuminate a unique color for instant status indication (Green for normal operation, Red for device active, and Yellow for device trouble). The isolator version of the module, P/N 55-048, provides complete short-circuit isolation for installations requiring NFPA, Class X wiring.

The module is compatible with Fike's CyberCat® and Cheetah® Xi intelligent control panels. Its operating parameters are configured using the panel's programming software and stored within the module's non-volatile RAM. This onboard intelligence allows each module to communicate its status directly to other devices connected to the Signaling Line Circuit (SLC). This peer-to-peer digital protocol results in less information that must be sent between the module and the host control panel, resulting in faster, more reliable communication.

### SPECIFICATIONS

Normal Operating Voltage:	15 to 30 VDC
Standby Current:	580 µA max. average (continuous broadcasts)
Alarm Current:	2 mA (red LED on)
Short Circuit Current, Dry Control Input:	30 mA max. average (5VDC)
Maximum Resistance, Dry Contact Input:	100Ω
Temperature Range:	32 to 120°F (0 to 49°C)
Humidity:	10 to 93% RH Non-condensing
Dimensions:	4.675" H x 4.275" W x 1.4" D (119 mm H x 109 mm W x 36 mm D)
Mounting:	4" square electrical box with 2 1/8" minimum depth. For surface mounting, use a 20-1347 surface mount box.

### ORDERING INFORMATION

Fike P/N	Mfg. P/N	Description
55-043	EM-1R	Relay Module, Non-isolator
55-048	EM-1RI	Relay Module, Isolator
<b>Accessories</b>		
CB500	CB500	Control Module Barrier
20-1347	SMB500	Surface Mount Box
55-051	EA-CT	IR Tool
FP-WHITE-ECL-BP	FP-WHITE-ECL-BP	Cover Plate



### APPROVALS:

- UL
- FM
- City of New York
- CSFM

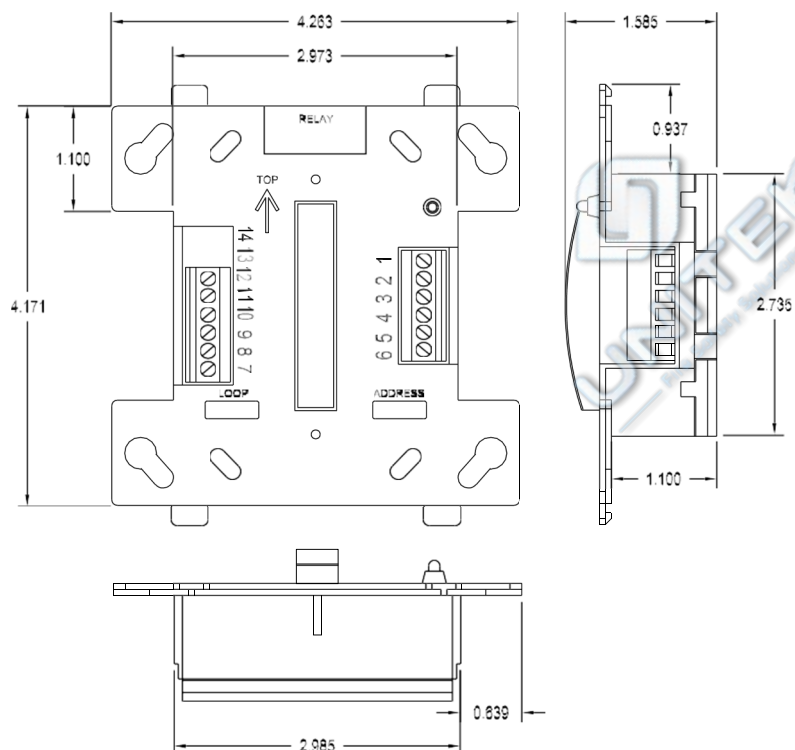
Refer to the agency web site for details.



## RELAY CONTACT RATING

Current Rating	Maximum Voltage	Load Description	Application
2A	25 VAC	PF=0.35	Non-Coded
3A	30 VDC	Resistive	Non-coded
2A	30 VDC	Resistive	Coded
0.46A	30 VDC	(L/R=20ms)	Non-coded
0.7A	70.7 VAC	PF=0.35	Non-Coded
0.9A	125 VDC	Resistive	Non-Coded
0.5A	125 VAC	PF=0.75	Non-Coded
0.3A	125 VAC	PF=0.35	Non-Coded

## MODULE DIMENSIONS



## TERMINAL DEFINITIONS

T1	(+) SLC in/out	T7	Normally Closed #1
T2	(-) SLC in/out	T8	Common #1
T3	(+) SLC in/out	T9	Normally Open #1
T4	(-) SLC in/out	T10	Normally Closed #2
T5	(+) Dry Contact Input	T11	Common #2
T6	(-) Dry Contact Input	T12	Normally Open #2